

Amy Lidster

Portfolio

Amy Lidster is a photographer who specialises in portraiture and landscapes. Applying both natural and staged lighting to achieve technical precision. Skilled in both digital and classic film techniques, she explores complex emotional themes, capturing facets of the human experience. Her work creates a unique synergy of modern and classic approaches, resulting in a subtle yet powerful aesthetic.


The inner world of her subjects is captured in an honest yet refined representation, engaging with deep themes like feminine vulnerability. Shaping her work into a refined portrayal of the human condition. Where compositions reveal layers of intimacy, it invites viewers to connect with the works on a personal level.

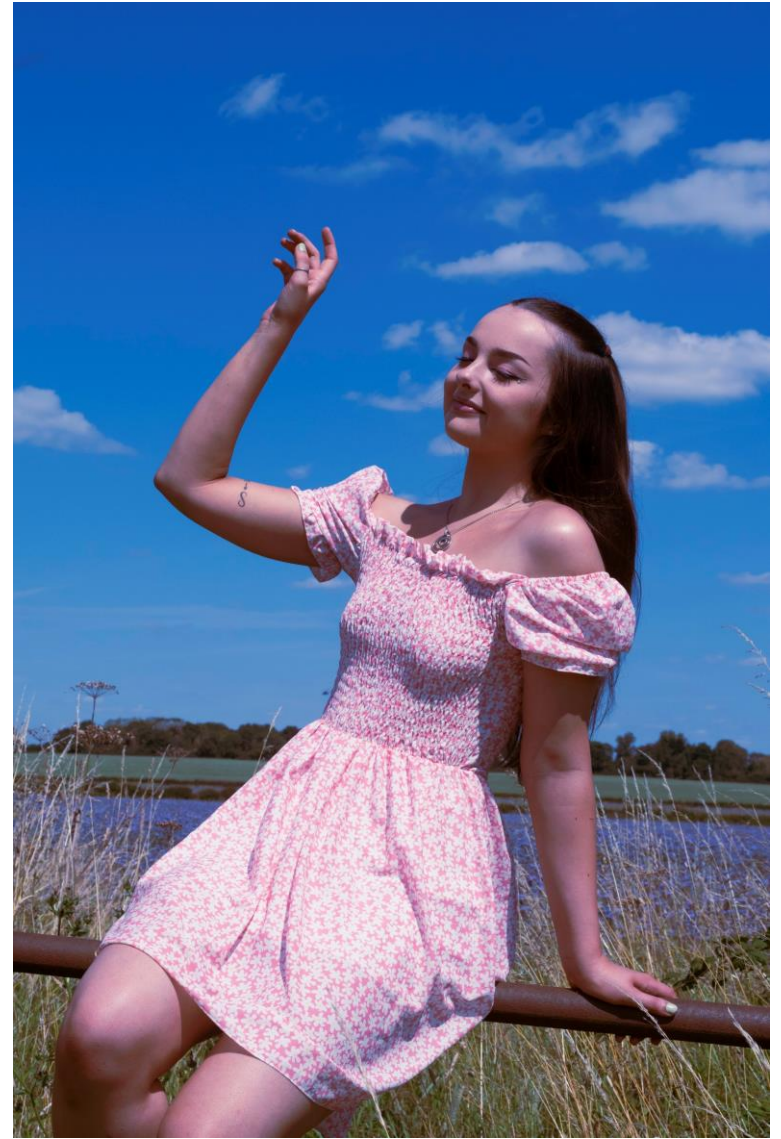


alphotography004 **in**

@amyl631photography 

alphotography.info@yahoo.com 

<https://www.amylphotography.co.uk/> 



Singer Songwriter Rosie Gault, 2024

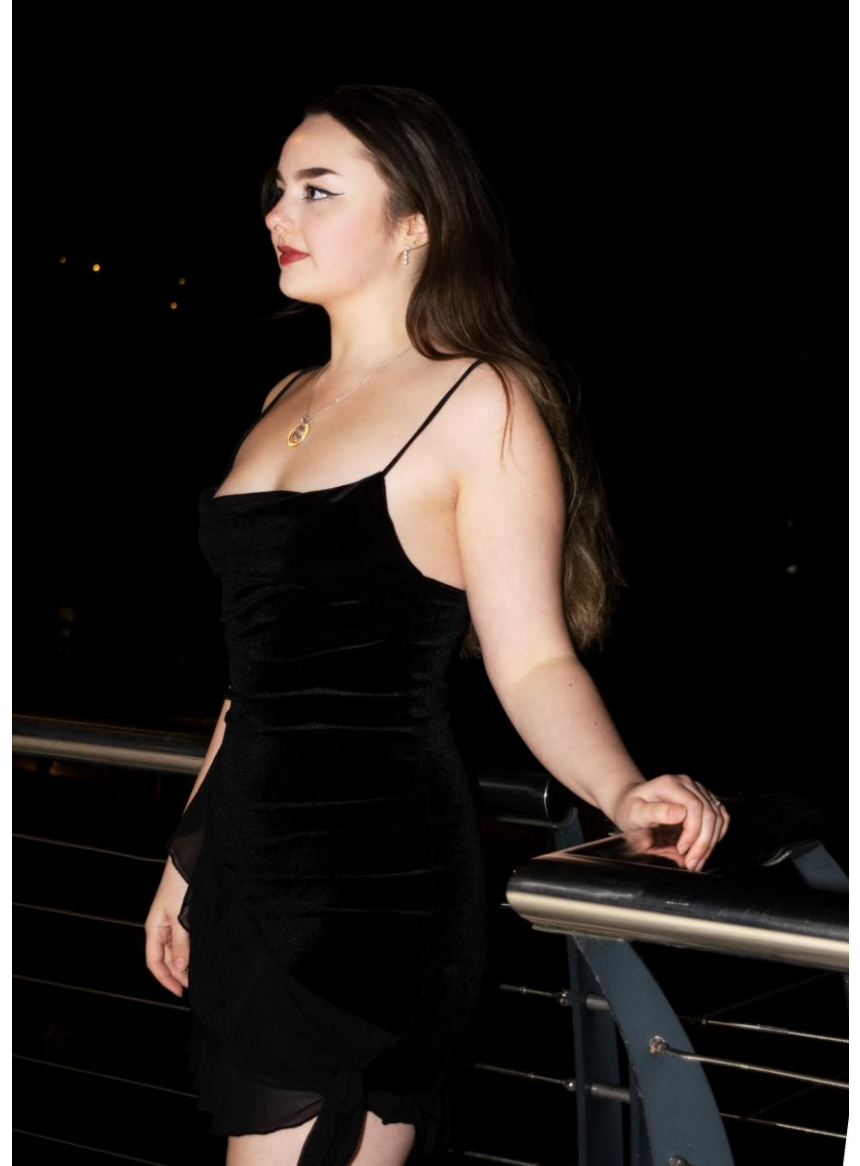
Commercial



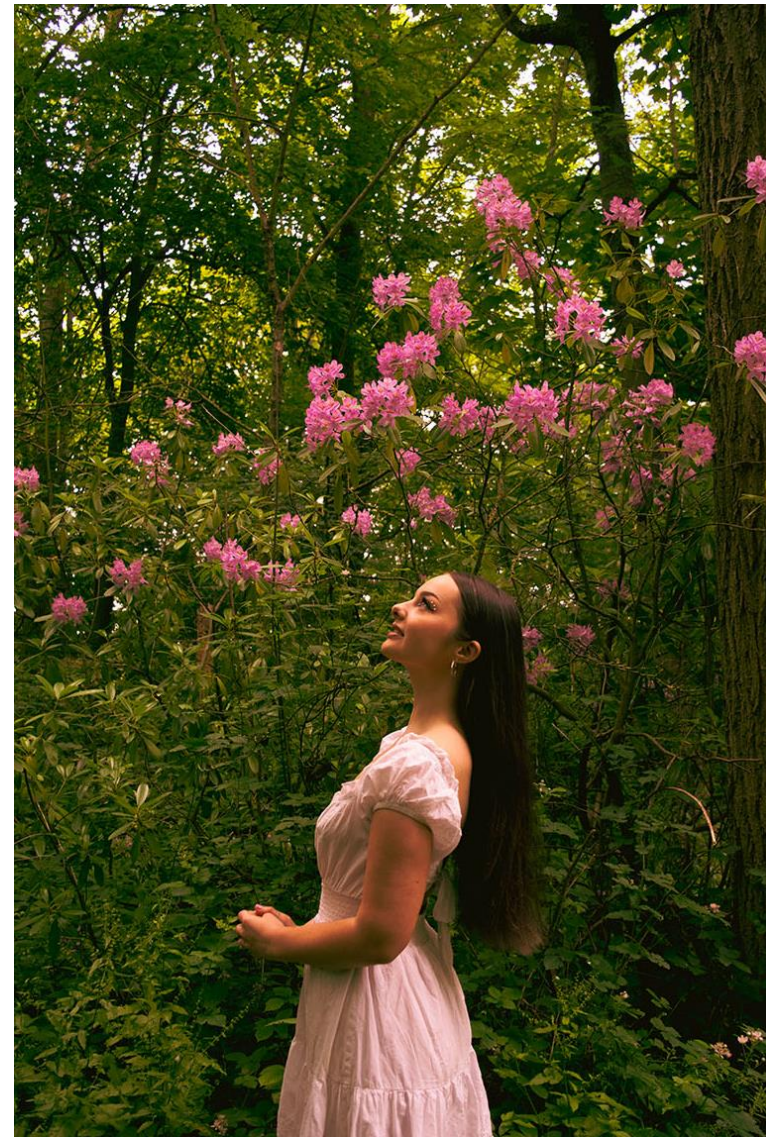
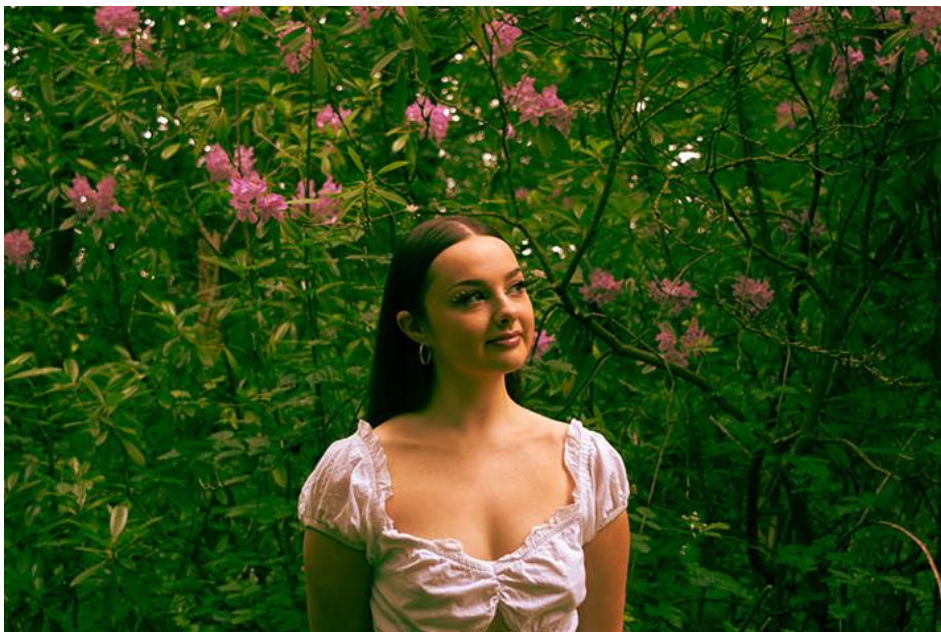
Singer Songwriter Rosie Gault, 2023



Singer Songwriter Rosie Gault, James Bond Album Cover, 2023



Headshots, Published in Bruadarach Music Interviews, 2024





Singer Songwriter Dema Raye, 2024



Turkey, 2024

Landscapes



Exploration of character portrayal, inspired by emotional music and exposed environments crafted into a short film. With carefully selected locations enhancing vulnerability and isolation you will view the vulnerable woman - the central character that portrays a unique voice through movement. Exposing one's emotions in the bareness of the surrounding landscape.

<https://www.amylphotography.co.uk/projects>



The Lake District, Ullswater, 2023



Isle Of Arran, Scotland





53°23'2"N



55°38'43"N



55°38'22"N

The haunting beauty of lone, distorted trees, using their forms to convey the impact of deforestation.

Each compass point title serves as a poignant marker, documenting where the tree once stood, if visited now, the tree might no longer remain.

An exploration in fragility of nature and humanity's role in its decline.



Through Her Eyes: After Dark





alphotography004 **in**

@amyl631photography 

alphotography.info@yahoo.com 

<https://www.amylphotography.co.uk/> 

